



GAT MONTHLY MEMBERSHIP PROGRESS REPORT

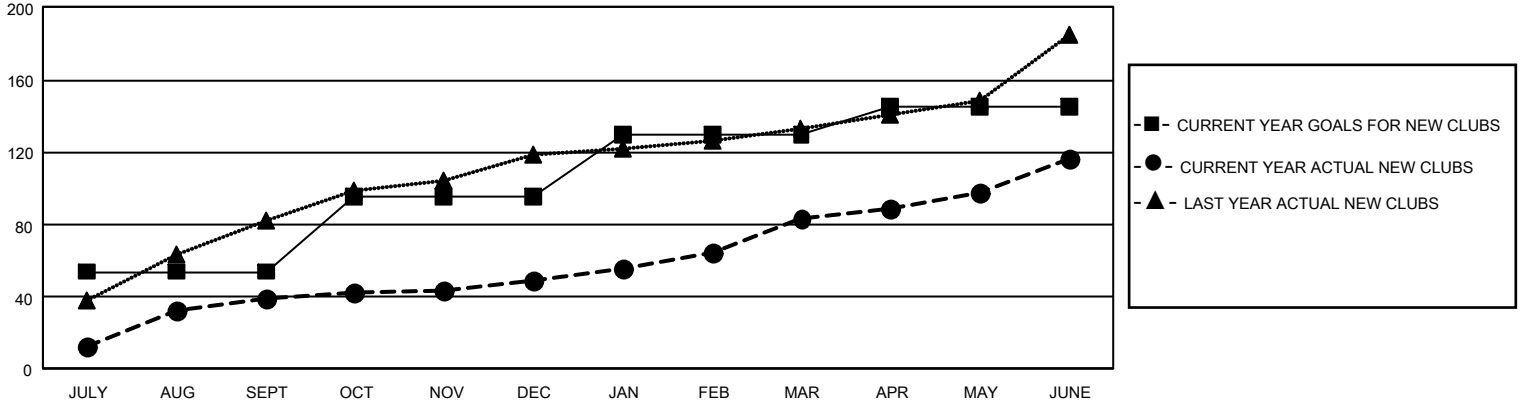
Results as of: 6/30/2023

GMT Constitutional Area 6, Group L

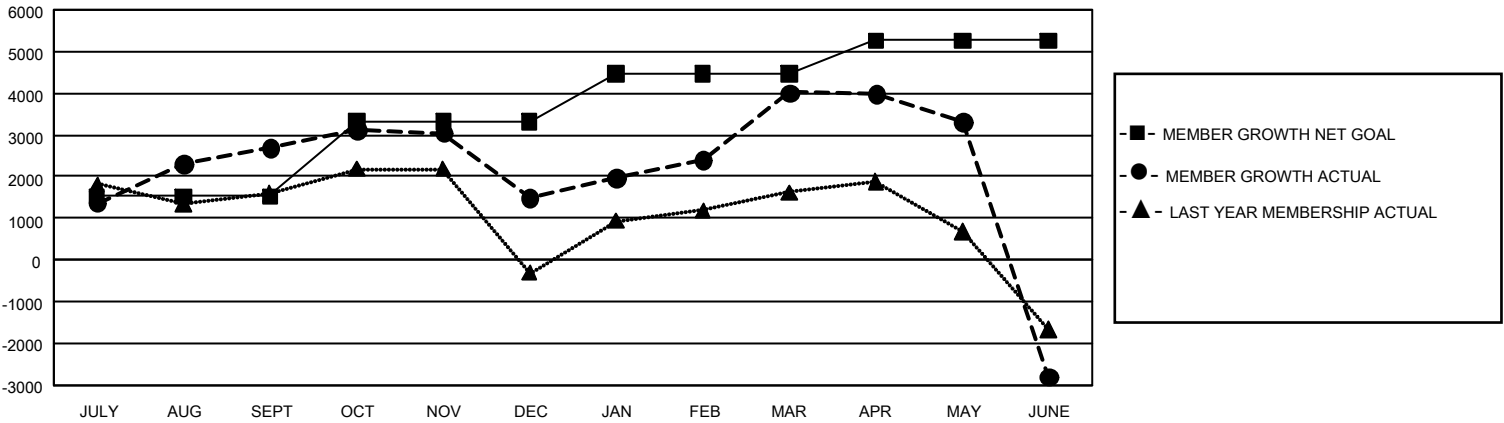
REPORT DOES NOT INCLUDE CLUBS IN UNDISTRICTED AREAS.

Clubs				Members			
RESULTS FOR 2022-2023				RESULTS FOR 2022-2023			
QUARTER	NEW CLUB GOAL	NEW CLUBS	DROPPED CLUBS	QUARTER	MEMBER GROWTH NET GOAL	MEMBER GROWTH ACTUAL	DROPPED MEMBERS ACTUAL (including transfers)
JULY/AUG/SEPT	162	39	11	JULY/AUG/SEPT	1520	5,060	1,242
OCT/NOV/DEC	123	10	44	OCT/NOV/DEC	1800	2,105	2,937
JAN/FEB/MAR	105	34	20	JAN/FEB/MAR	1155	4,453	1,113
APR/MAY/JUNE	45	33	33	APR/MAY/JUNE	790	2,932	9,217

GOALS AND ACTUAL NEW CLUBS CUMULATIVE



GOALS AND ACTUAL MEMBERS CUMULATIVE



DROPPED CLUBS: 108	1,415 CLUBS OF 1,838 ADDED 1 OR MORE NEW MEMBERS	GENDER DISTRIBUTION	
		MALE 49,777 (78.40%) FEMALE 13,708 (21.59%) NON BINARY 2 (0.00%) PREFER NOT TO ANSWER 8 (0.01%)	
DROPPED MEMBERS		CLICK HERE FOR CUMULATIVE MEMBERSHIP DATA	
DECEASED 287 CLUB CANCELLED 2,265 OTHER 11,960 TOTAL 14,512	TOTAL FAMILY UNIT MEMBERS 25,001 FAMILY MEMBERS PAYING HALF DUES 15,439		